

HUDSON'S GOOD

impressions



Printing and Graphic Arts Hints, News and Product Updates.

FEBRUARY 1999

KISS CREASE



PLASTIC MATRIX

SOFT PLASTIC LOCATOR FOR EASY APPLICATION TO CREASING RULE

POSITIONING NIB FOR PRECISE LOCATION

HARD PLASTIC SHOULDERS FOR LONG PRODUCTION RUNS

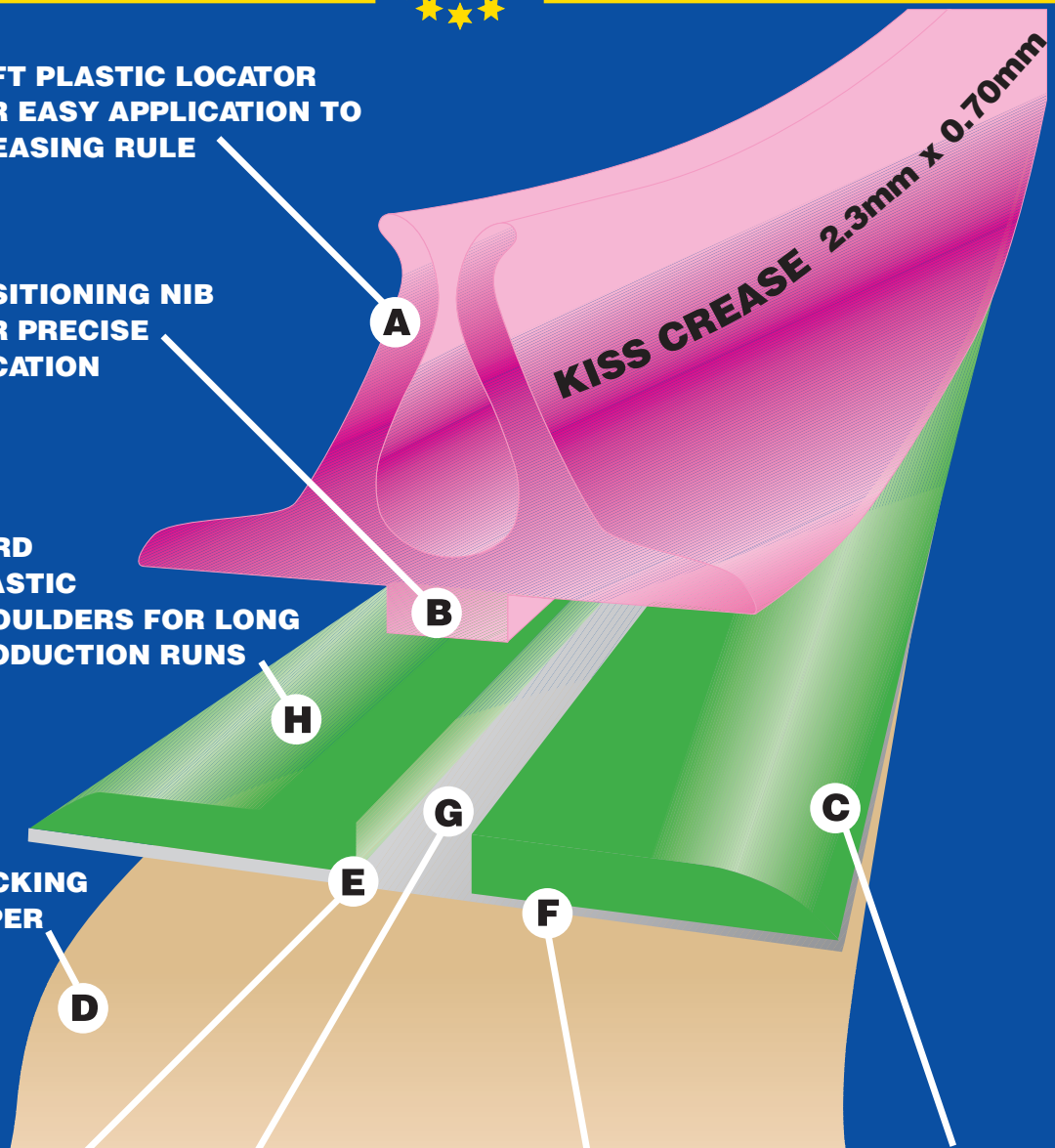
BACKING PAPER

MICRO THIN FILM BASE

PRECISION ENGINEERED CHANNEL WIDTH AND DEPTH

LONG LASTING ADHESIVE PREVENTS MOVEMENT DURING USE

BEVELLED EDGES SAVES PREPARATION TIME



SPECIAL-PURPOSE CHEMICAL PENS!

FOR METAL PLATES

REMOVING IMAGE: 'ONE TOUCH'

Hudson's 'One Touch' pens will delete unwanted image on all types of unbaked presensitised negative or positive plates and chemical transfer metal plates. They are available in two sizes: 'Tough' thick for large areas and 'Mini' fine for small areas and repairing fine lines.



228-050



228-051

ADDING IMAGE: 'LACQUER PENS'

Ideal for adding image to all types of metal plates such as a hole in a solid or a broken line - even a full stop that was forgotten. Ensure that the plate area is clean, free of gum and ink and perfectly dry. Apply in one stroke and allow to dry before printing. Two sizes: Dual (broad & fine tips) and Fine (one tip).



228-053



228-054

OPAQUING PENS

REGU - REDLINE

Regu Redline pens are the ideal means for opaquing, quick masking and corrections on film negatives and positives. They are filled with a red transparent masking lacquer. This special lacquer is easy to see through yet is absolutely light proof to actinic light. If the need arises it can be removed with normal solvents. Users will find Regu opaquing pens are effective, long lasting and very economical.

Three sizes are available: LB (broad) for opaquing large areas; LF (fine) for small areas with a fine Nylon tip; and LS (very fine) where the very fine Nylon tip is ideal for delicate work.



271-LB



271-LF



271-LS

IMPORTANT: ALWAYS REPLACE THE CAP IMMEDIATELY ON ANY CHEMICAL PENS SO THEY WON'T DRY OUT & WILL LAST MUCH LONGER.

FOR SILVER TYPE PLATES

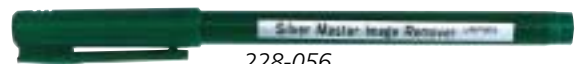
REMOVING IMAGE

Unwanted type, spots or specks can be removed easily and permanently from silver type plates such as Silvermaster and Supermaster. Deletions are best made off the press on a thoroughly dry plate. After the erasure is dry, printing can proceed.

Two sizes are available: the 'Thick' pen for broad areas and 'Fine' pen for delicate work.



228-055



228-056

MIGHTY IMAGE ADDITIONER PENS

Available in three sizes, the Mighty pen allows users to add image to silver type plates, electrostatic plates and metal plates all from the same pen. Simply clean off the ink with solvent from the part where the correction is required and lightly apply Mighty Image Additioner to a dry plate surface. Fine, Brushpoint & Broadpoint.



228-MIA-01



228-MIA-02



228-MIA-03

OTHER TYPES:

REGU-BLUE MARKER PENS

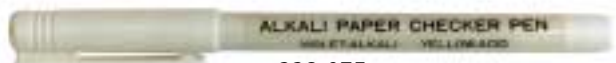
The Regu Blue (RMF) is a marking pen for both film and foil. Particularly suited for making corrections or guide marks and instructions on artwork or positive films. The quick drying transparent blue ink will not reproduce on film or plate.



271-RMF

ALKALI PAPER CHECKER PEN

Determines whether the paper is either alkaline or acidic. When the pen is applied to paper and it turns yellow, it is acid (ph lower than 6.0); when it turns violet, it is alkaline (ph higher than 7.0).



228-075

ELECTROSTATIC IMAGE REMOVER

This pen safely and effectively removes any unwanted image on electrostatic plate masters after they have been fused. Available in two sizes: Thick for broad areas and Thin for spots and specks etc.



228-063



228-064



HIGH PERFORMANCE CONSISTENT QUALITY INKS THAT WORK!

FOR MEDIUM TO LARGE PRESSES

Quickson

PROCESS COLOUR
INKS AT THEIR BEST

Whether you're running a multicolour mid-size, or a high-speed six colour press, you'll be amazed at the difference Quickson makes - in colour, gloss, trap tolerance, setting time and scuff-resistance.

It can be left on an idle press for hours, print on all surfaces and works brilliantly with in-line aqueous coatings.

Quickson ink offers:

- Intense colour.
- Brilliant gloss.
- Perfect traps.
- Faster setting.
- Minute dot again.
- Rub resistance like no other ink.
- Superior blanket release.

There are really only two cost factors to consider when evaluating process inks.



Press performance and mileage. That's why Quickson printing inks are the value leaders. They are formulated with dry, ground pigments and custom blended varnishes for better dispersion, colour strength and greater mileage.

All Quickson inks are packed in vacuum sealed cans (2.5 kilo & 1 kilo), so there's no wasted ink or an aggravating hickie problem.

The bottom line is that Quickson goes further, prints better, and saves money in the long run. And to ensure environmental responsibility, Quickson inks are predominantly formulated with vegetable drying oils.

FOR SMALL SIZE OFFSET PRESSES

INFINITY

THE ULTIMATE
ACRYLIC INK

Infinity is truly a breakthrough product. It performs flawlessly with all plate systems and stays open on the press overnight.



Infinity dries hard and fast, on both coated and uncoated stocks, so you can back up and fold sooner and get the job out the door faster!

Infinity ink:

- Dries hard and fast on coated and uncoated stocks.
- Stays open on the press and doesn't skin in the can.
- Runs with all plate systems.
- The unique acrylic varnish eliminates toning.
- For all types of small offset presses.

This versatile new product from Van Son is the closest thing yet to the all-purpose ink every printer has always wanted. Now there is little need to stock different inks for different jobs.

Once again, Van Son continues to lead the way into the next generation of ink products that help printers do their job better.

The fabulous new acrylic Infinity ink is available in universal black and the basic range of PANTONE colours off the shelf.

Hudson's offers an ink mixing service whereby you can order Infinity in any of the 1000 PANTONE colours in one kilo lots.

FOR PRINTING ON NON-POROUS STOCKS

Tough Tex

SUITABLE FOR ALL SIZE
PRESSES WHEN
PRINTING ON
DIFFICULT NON
POROUS SURFACES
**Such as: Plastics Synthetic
Stocks Vinyl and Foils.**

Van Son Tough Tex is a special purpose ink that is designed for use on non porous surfaces. Plastics, mylar and foils are some of the synthetic stocks that require an ink such as Van Son Tough Tex. Because there is no absorption of ink into non-porous stocks, ink must dry by oxidation.

Available in the full range of Pantone colours, plus silver and gold, Tough Tex is the ink that will dry to a brilliant glossy finish. Great for waterproof labels, bumper stickers, signs, menus and tags or virtually anything that must stand up to repeated handling and exposure to the elements.

When printing on such unfriendly surfaces a little more care should be exercised. These types of stocks are usually quite expensive and reprints can be costly.



Therefore we urge that proper and good printing practices be observed.

Simple yet full instructions on the use of Van Son Tough Tex is included with all initial

orders placed with Hudson's. Turning away printing on non-porous stock is turning away profit. With Van Son Tough Tex Ink you will be able to print on most unfriendly surfaces with absolute confidence.

**New
from**



**The World's
No.1
Paperdrill**

**Now available
from Hudson's**

BRA™ T.C. (TUNGSTEN CARBIDE) PAPERDRILL BITS

- 35 per cent harder than conventional drill bits with up to triple the wear resistance.
- Reduces the down time for sharpening and replacement of broken drill bits.
- Increases cutting speed due to less friction during the drilling operation.
- Reduces paper waste jamming - the inside conical hole of the BRA™ paperdrills are treated with a special abrasive compound giving a smooth surface.

TYPE	DRILLING CAPACITY	DIAMETER	ORDER CODE
Sterling	58 mm	1/4"	3590-T
Sterling	65 mm	1/4"	3590-LT
Iram	65mm	6 mm	1580-T
Iram	65mm	8 mm	1610-T



Guarantee
Try the BRA™ T.C. paperdrill and if you are not totally convinced these drill bits can improve your productivity then only pay for a standard BRATM paperdrill.

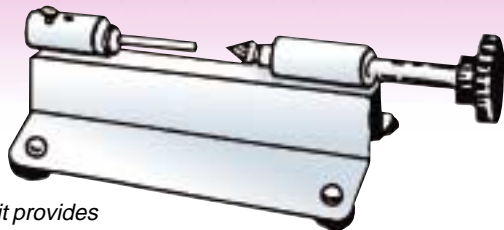
WIZER SHARPENERS FOR PAPER DRILL BITS

NEW PRECISION DRILL SHARPENER

The new Wizer Paper Drill Sharpener is a high precision sharpener of hollow drill bits.

The expensive 21 blade carbide cutting head will sharpen a drill bit in seconds. Here is a drill sharpener that holds a drill bit so that the cutting blade fits exactly into the centre of the bit. This provides an even cut all the way around and suits most makes of paper drills.

- ▲ High quality carbide 21 blade cutting head.
- ▲ The non electric hand sharpening unit provides better control than electric sharpeners.
- ▲ Visible sharpening - not in a hole, so you can see what you're sharpening.
- ▲ Simple solid construction.
- ▲ Sharpens drill bits from 1/8" (3.1 mm) thru 1/2" (12.7 mm).



Code: 234-W-169A

PENCIL TYPE SHARPENER

As easy as can be...

Sharpens like a pencil sharpener and just as fast. Turn the handle for a few seconds and your drill bit is sharpened. This sharpener has 16 carbide cutting edges for fast and easy sharpening.



- ▲ Sharpens all types of drill bits up to 1/2" (12.7 mm).
- ▲ The cutter heads are multi fluted having 16 carbide cutting edges which give a more even sharpen.
- ▲ Because the cutting heads are made of 94% tungsten carbide and 6% cobalt they will last for many years without having to replace the cutting head.

Code: 234-W-169B

Please note all material contained in Hudson's Good Impressions is subject to copyright and may not be reprinted in whole or in part without the express permission of A.E.Hudson Pty Ltd. Specials quoted are trade prices and do not include sales tax. Limited stock is available on specials. Freight is additional.



Quality
Endorsed
Company



A. E. HUDSON PTY. LIMITED • GRAPHIC ARTS SUPPLIERS

A.C.N. 004 432 286

FAX: SYD. (02) 9643 8211 MELB. (03) 9388 0925 BRIS. (07) 3252 1515

AS9002
Lic. 2046
Standards Australia
Sydney & Melbourne

SYDNEY: JAMES & EAST STS
LIDCOMBE NSW 2141
TELEPHONE: (02) 9643 8200
Email: hudson@hutch.com.au

MELBOURNE: 417 ALBERT STREET
BRUNSWICK VIC 3056
TELEPHONE: (03) 9380 2277

BRISBANE: 30 EDGAR STREET
BOWEN HILLS QLD 4006
TELEPHONE: (07) 3252 8212
QLD COUNTRY: (07) 5575 5077

ADELAIDE: (08) 8363 4466
PERTH: (08) 9388 3040
TASMANIA: (03) 6234 5622