

- Not Advertised in the Trade Press -



HUDSON'S

imprints

MACHINERY

CONSUMABLES

EQUIPMENT

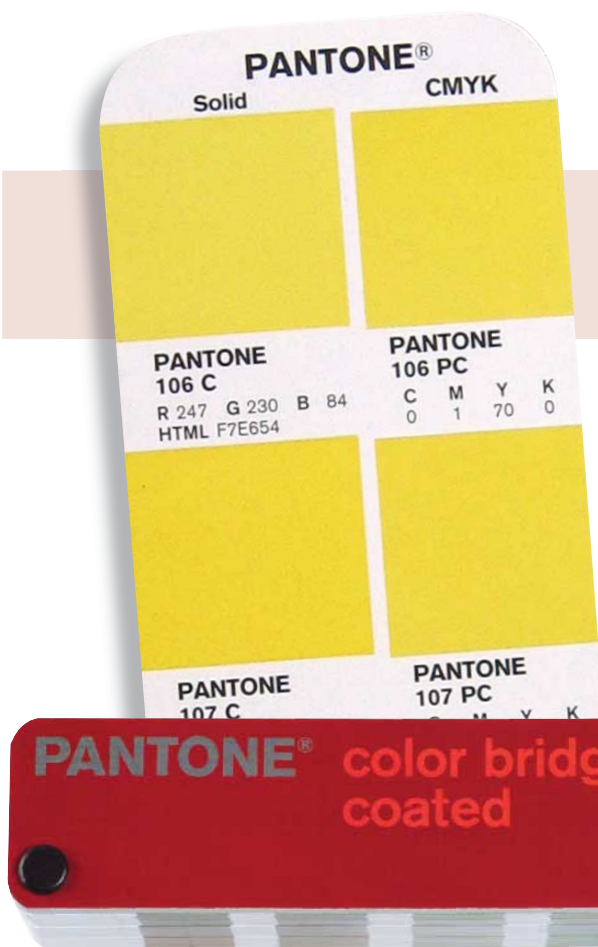
Customer Newsletter - June 2005

Don't Get Left Behind!

The latest advancement in the world of colour is the...

PANTONE® color bridge™ matches solids in process and RGB.

- Select and specify solid PANTONE® colours on coated stock
- Determine how a PANTONE® colour will appear when reproduced in CMYK
- Create optimal display of PANTONE® colours on monitors and web pages.



New!

- Improved process matches and updated CMYK screen tint percentages
- Greater utility with sRGB and HTML values added for solid colours
- Increased colour area with taller, wider layout
- Whiter, more durable coated paper
- Produced using a complete digital workflow

	Usual	Special
PANTONE® color bridge	\$226.00*	\$175.00*
PANTONE® formula guide	\$163.00*	\$135.00*
<small>(printer's edition to match new color bridge™)</small>		
BOTH FOR \$289.00*!		
SAVE \$100! Offers ends 30 June		

*plus GST

PANTONE® and other Pantone, Inc. trademarks are the property of Pantone, Inc. All rights reserved.

Replaces the PANTONE® Solid to Process Guide.

PRINT SHOP SAFETY

Chemical storage cabinets



Provides safe storage of flammable liquids

Solvent Resistant Protective Gloves



Great protection during press wash-ups and for dermatitis risk.

Hudson's also stocks white cotton and clear vinyl gloves, plus fine compressed sponges & blanket scrubbers.

Self Adhesive Tapes and Signs



'Watch your step'

60 cm x 15 cm sign.

Yellow and black or striped tape

48 mm x 18.2 m rolls.

Sign and tapes have abrasive non-slip surface. Stairs, steps and press catwalks.



Justrite Oily Waste and Plunger Cans Reduce Fire Risk



For solvent sodden cloths and wiping rags.



Convenient foot pedal operation.



Safely moistens wiping cloths with excess draining back into can.



The perforated pan screen is a very effective flame arrester.

Anti-fatigue and Safety Mats

Safety SpongeCote

- Chemically resistant Koroseal® vinyl surface bonded to a super-resilient, vinyl sponge base.

Ideal for plate room and pressroom. All dry work areas.

- Instils safety consciousness while providing superb anti-fatigue support
- Features the universally recognised safety/warning border
- Ergonomic support enhances employee moral and productivity

Colours: Black with Yellow Chevron Safety Borders.

900 mm x 1500 mm lengths



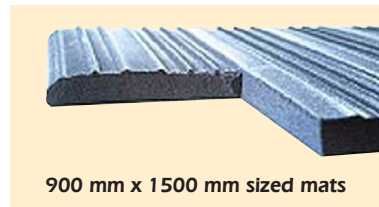
Ribbed Cushion 900

The ribbed surface design provides non slip traction and reduces leg and back fatigue.

It's great for workers standing all day, such as in the finishing department.

Ribbed Cushion 900 insulates against cold and floor hardness and reduces noise levels.

It is nine millimetres thick and comprises 100 per cent closed vinyl sponge with safety edges.



900 mm x 1500 mm sized mats

A. E. HUDSON PTY. LIMITED • INCORPORATING GRAPHIC IMPORTS 

A.B.N. 52 004 432 286

www.hudsons.com.au

SYDNEY: JAMES & EAST STS
LIDCOMBE NSW 2141
TELEPHONE: (02) 9643 8200
Email: info@hudsons.com.au
FAX: (02) 9643 8211

MELBOURNE: 26 CEYLON STREET
NUNAWADING VIC 3131
TELEPHONE: (03) 9894 3434
Email: melb@hudsons.com.au
FAX: (03) 9894 3553

BRISBANE: 18 EDMONDSTONE ROAD
BOWEN HILLS QLD 4006
TELEPHONE: (07) 3252 8212
Email: bris@hudsons.com.au
FAX: (07) 3252 5367

QLD COUNTRY: (07) 5575 5077
ADELAIDE: (08) 8363 4466
PERTH: (08) 9443 2244
TASMANIA: (03) 6234 5622